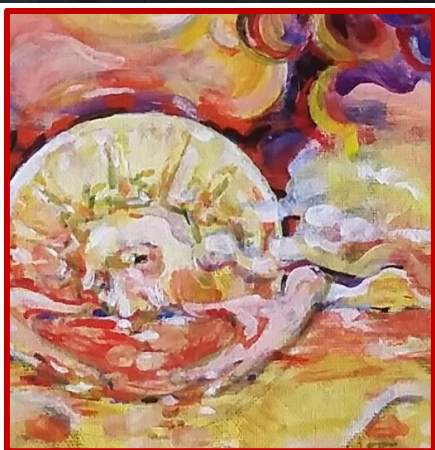


Artist Mark Shafer's step by step creative process on "Ocean of Mercy", involves daily painting, religious figures with emerging fine details that tell the story, and sometimes dedicated with brush strokes for a friend or loved one.

25 November- Cuban dictator, Fidel Castro dies...upon arriving at the studio I am horrified to discover the encroaching lavender sand had made Padre Pio look like Fidel's clone...a few pencil strokes rectified the situation and Pio was back to his authentic self.

The **HOLY FACE** begins to take on more definition and richness of color but the mouth wrongly suggests a mood of gloomy boredom with a hint of disgust [a subtle quality which can only be discerned in the original]....this changes on 5 December with addition of a tiny slash of blue in the corner of His Mouth.



December 9- FEAST of **JUAN DIEGO** - he is added- an obvious [though unexpected] companion to the other **MARIAN VISIONARIES**.

11 December 2016, 3 a.m.-the base of a **CHALICE** begins to assert itself in my imagination [along the edge of Juan Diego's **TILMA**]...cascading

roses will help define the foot of this Chalice...paper pattern cut around 3 p.m. [guide for a shadowy silhouette image]research begins for **LEPANTO** imagery [1571] - **BATTLE FLAG** of the HOLY LEAGUE will be depicted instead of a miniature sea battle

12 December- **GUADALUPE** roses added and dedicated to grieving friends who lost a son-in-law

